

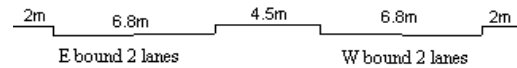
YEAR 2023

CORE STATION 5017

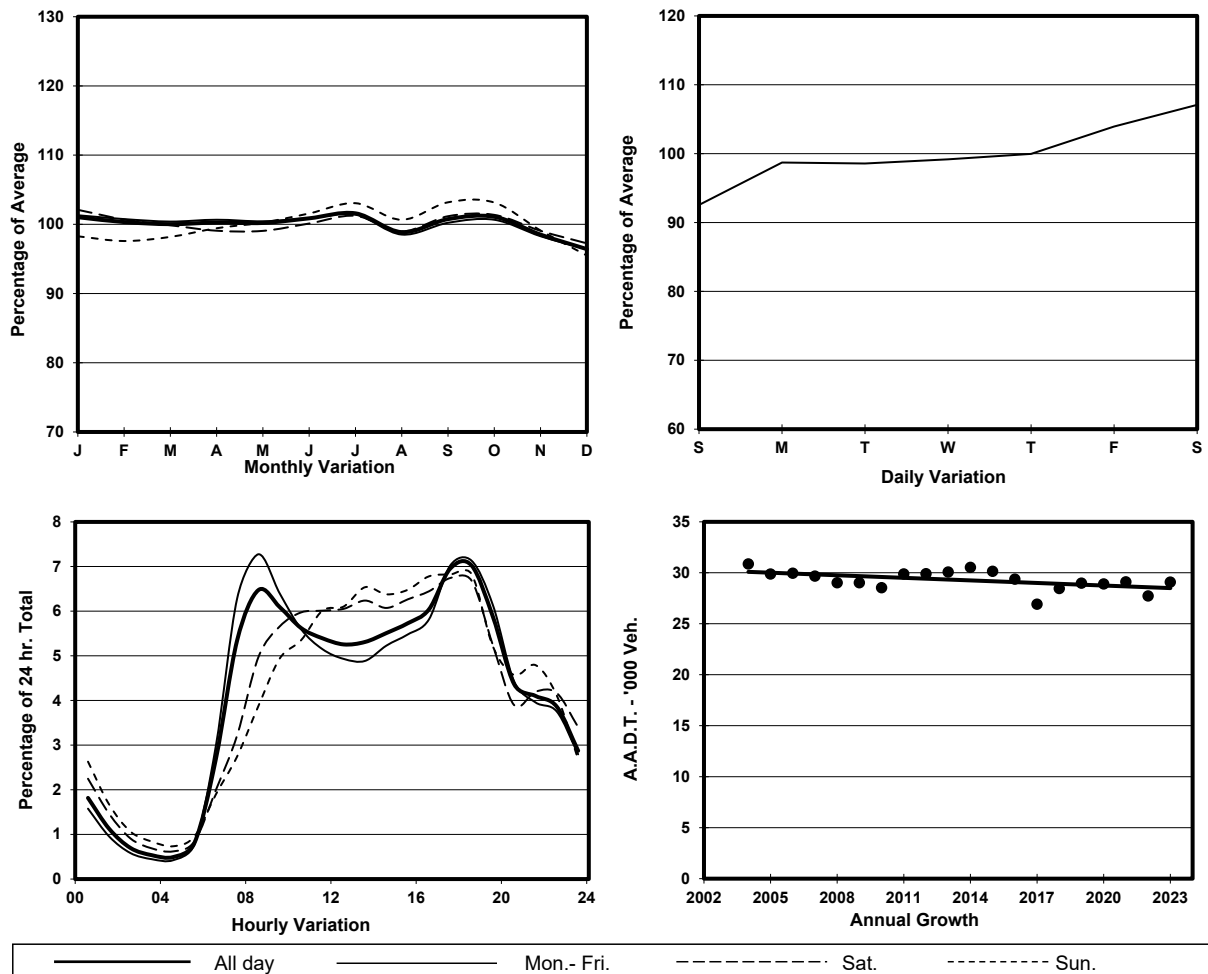
ROAD NETWORK MAJOR

ROAD TYPE RURAL ROAD

LINK CLEAR WATER BAY RD (from ON SAU RD to HIRAM'S HIGHWAY)



## 1. TRAFFIC FLOW VARIATION AND GROWTH



## 2. TRAFFIC CHARACTERISTICS (BY DIRECTION)

Parameter	All - Day	Mon. - Fri.	Sat.	Sun.
<b>EAST BOUND</b>				
A.A.D.T.	14470	14540	15500	13530
R 12 / 24 - %	66.4	66.1	67.4	67.4
R 16 / 24 - %	88.7	89.4	87.2	86.9
AM Peak Hour	0800-0900	0800-0900	0900-1000	0900-1000
One-way flow at AM peak hour	760	820	780	620
T - % (AM)	-	7.6	-	-
PM Peak Hour	1800-1900	1800-1900	1800-1900	1600-1700
One-way flow at PM peak hour	1100	1180	1020	920
T - % (PM)	-	4.7	-	-
Prop.of commercial vehicles - 16 hr.	-	5.7	-	-
<b>WEST BOUND</b>				
A.A.D.T.	14610	14690	15760	13480
R 12 / 24 - %	75	76.3	73.2	70.3
R 16 / 24 - %	89.2	89.6	88.5	88.1
AM Peak Hour	0800-0900	0800-0900	0900-1000	0900-1000
One-way flow at AM peak hour	1120	1310	990	720
T - % (AM)	-	3.9	-	-
PM Peak Hour	1700-1800	1700-1800	1700-1800	1800-1900
One-way flow at PM peak hour	1050	1070	1110	1030
T - % (PM)	-	4.8	-	-
Prop.of commercial vehicles - 16 hr.	-	4.4	-	-

## 3. OTHER INFORMATION AND COMMENT

**4. Vehicle classification and occupancy - Monday to Friday**

Time		Class of vehicle									
		Motor Cycle	Private Car	Taxi	Private LB	PLB	Goods veh.		Non Fr. Bus	Fr. Bus	
							Light	M & H		SD	DD
0700-0800	Pro	4.4	67.7	6.3	0.5	7.3	8.9	2.4	1.5	0.0	1.1
	Ocp	1.0	1.4	2.2	6.0	15.9	1.5	1.3	10.2	0.0	47.1
0800-0900 Peak hour	Pro	6.1	61.4	9.2	0.2	6.3	11.3	1.6	2.5	0.0	1.4
	Ocp	1.0	1.3	2.1	2.0	17.5	1.6	1.6	26.6	0.0	51.7
0900-1000	Pro	4.2	58.4	10.8	0.5	6.8	13.6	2.8	1.6	0.0	1.2
	Ocp	1.1	1.3	2.1	1.0	13.7	1.2	1.7	2.0	0.0	41.2
1000-1100	Pro	2.8	55.5	7.7	2.8	9.1	17.1	2.8	0.9	0.0	1.3
	Ocp	1.0	1.3	2.0	2.5	12.3	1.4	1.2	1.3	0.0	39.3
1100-1200	Pro	4.2	53.3	11.1	0.7	7.5	16.7	2.9	2.0	0.0	1.6
	Ocp	1.0	1.3	2.0	1.0	12.6	1.5	1.0	1.3	0.0	39.8
1200-1300	Pro	2.3	56.5	8.4	2.6	9.7	16.6	1.6	1.0	0.0	1.3
	Ocp	1.1	1.3	1.9	5.4	11.5	1.5	1.4	14.0	0.0	37.0
1300-1400	Pro	2.1	57.0	11.0	1.8	7.2	13.7	3.3	2.4	0.0	1.6
	Ocp	1.1	1.3	2.0	1.2	11.3	1.6	1.4	1.9	0.0	32.7
1400-1500	Pro	4.2	50.6	10.1	1.8	6.5	17.3	5.7	2.4	0.0	1.5
	Ocp	1.0	1.5	1.8	1.8	13.0	1.5	1.5	18.5	0.0	25.8
1500-1600	Pro	3.6	54.1	10.9	2.5	7.4	14.7	2.0	3.6	0.0	1.1
	Ocp	1.1	1.3	2.0	3.5	11.2	1.5	2.1	9.9	0.0	34.2
1600-1700	Pro	4.9	49.6	19.0	2.1	6.0	13.9	1.6	1.4	0.0	1.5
	Ocp	1.1	1.4	1.7	5.2	14.3	1.6	1.0	8.7	0.0	38.2
1700-1800	Pro	7.4	58.0	8.6	2.4	7.6	9.8	1.2	3.1	0.0	1.9
	Ocp	1.1	1.4	2.0	2.0	15.6	1.7	1.0	5.1	0.0	44.1
1800-1900	Pro	6.9	64.1	9.9	0.0	7.6	6.9	2.0	1.1	0.0	1.4
	Ocp	1.1	1.3	2.1	0.0	16.1	1.5	1.3	22.6	0.0	50.4
1900-2000	Pro	4.1	66.8	8.7	0.0	12.3	6.0	0.3	0.5	0.0	1.2
	Ocp	1.1	1.3	1.8	0.0	10.3	1.3	1.0	1.5	0.0	28.2
2000-2100	Pro	6.1	61.2	17.1	0.0	6.1	7.4	0.3	0.3	0.0	1.5
	Ocp	1.2	1.3	1.8	0.0	13.8	1.5	1.0	12.0	0.0	23.2
2100-2200	Pro	6.8	61.1	18.7	0.0	7.1	4.5	0.0	0.6	0.0	1.3
	Ocp	1.1	1.5	1.7	0.0	11.7	1.3	0.0	2.5	0.0	18.2
2200-2300	Pro	2.7	65.0	17.1	0.0	7.4	5.1	0.4	0.8	0.0	1.6
	Ocp	1.0	1.5	1.9	0.0	12.9	1.2	1.0	1.0	0.0	22.4
16 hours	Pro	4.7	58.8	11.3	1.1	7.6	11.5	2.0	1.7	0.0	1.4
	Ocp	1.1	1.3	1.9	3.1	13.4	1.5	1.4	10.6	0.0	37.3

**Legend: Pro.** Proportion of vehicles in % (Sum may not add up to 100% due to figure rounding)\*

**Ocp.** Average occupancy of vehicles including both driver and passengers\*

**M&H** Medium and Heavy

\* All traffic data are collected from combined bounds